



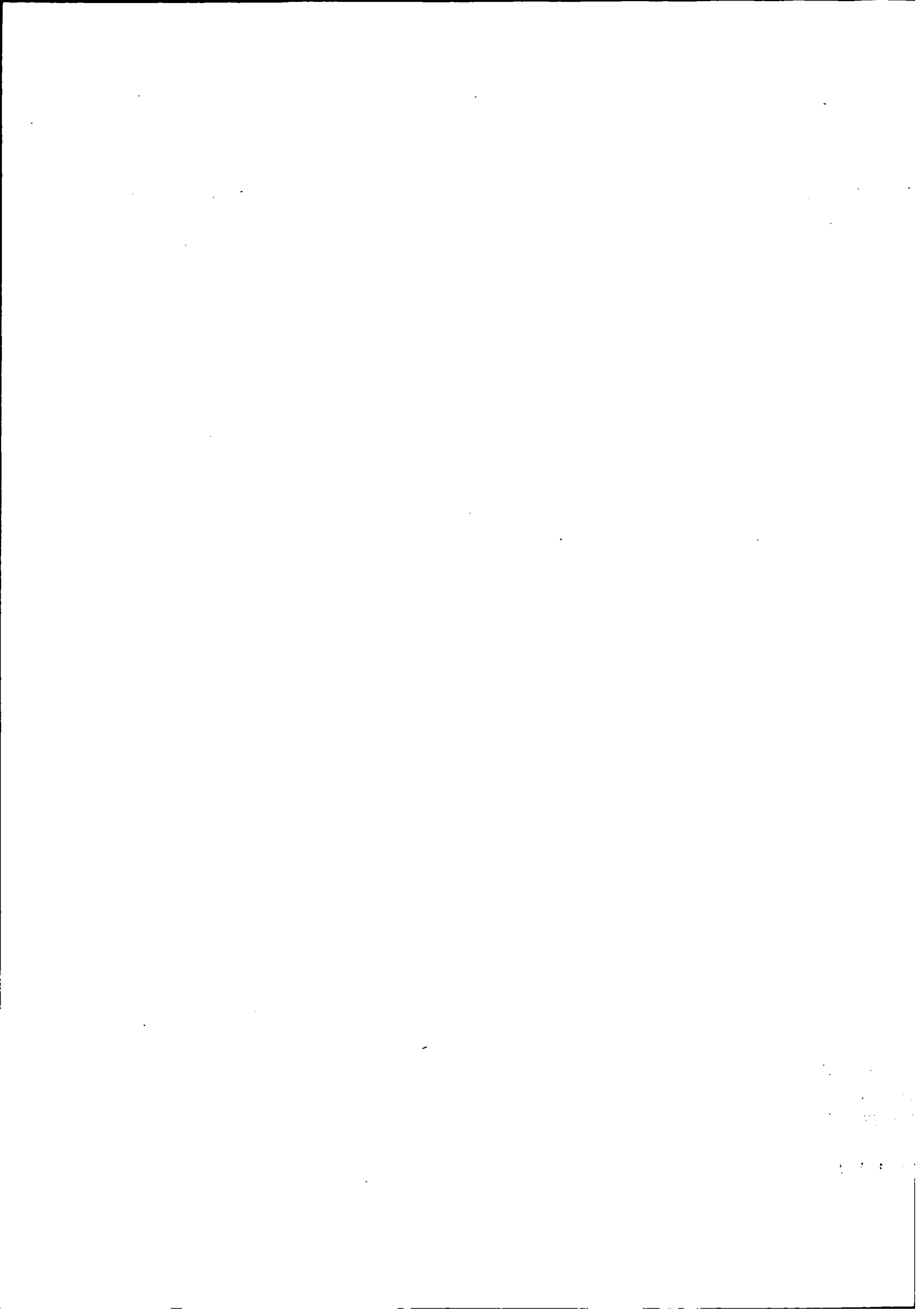
**QUARTERLY ESTIMATES  
OF  
NATIONAL INCOME AND  
EXPENDITURE**

**JUNE QUARTER 1975**

**AUSTRALIAN  
BUREAU OF  
STATISTICS**

**CANBERRA**

Reference No. 7.5

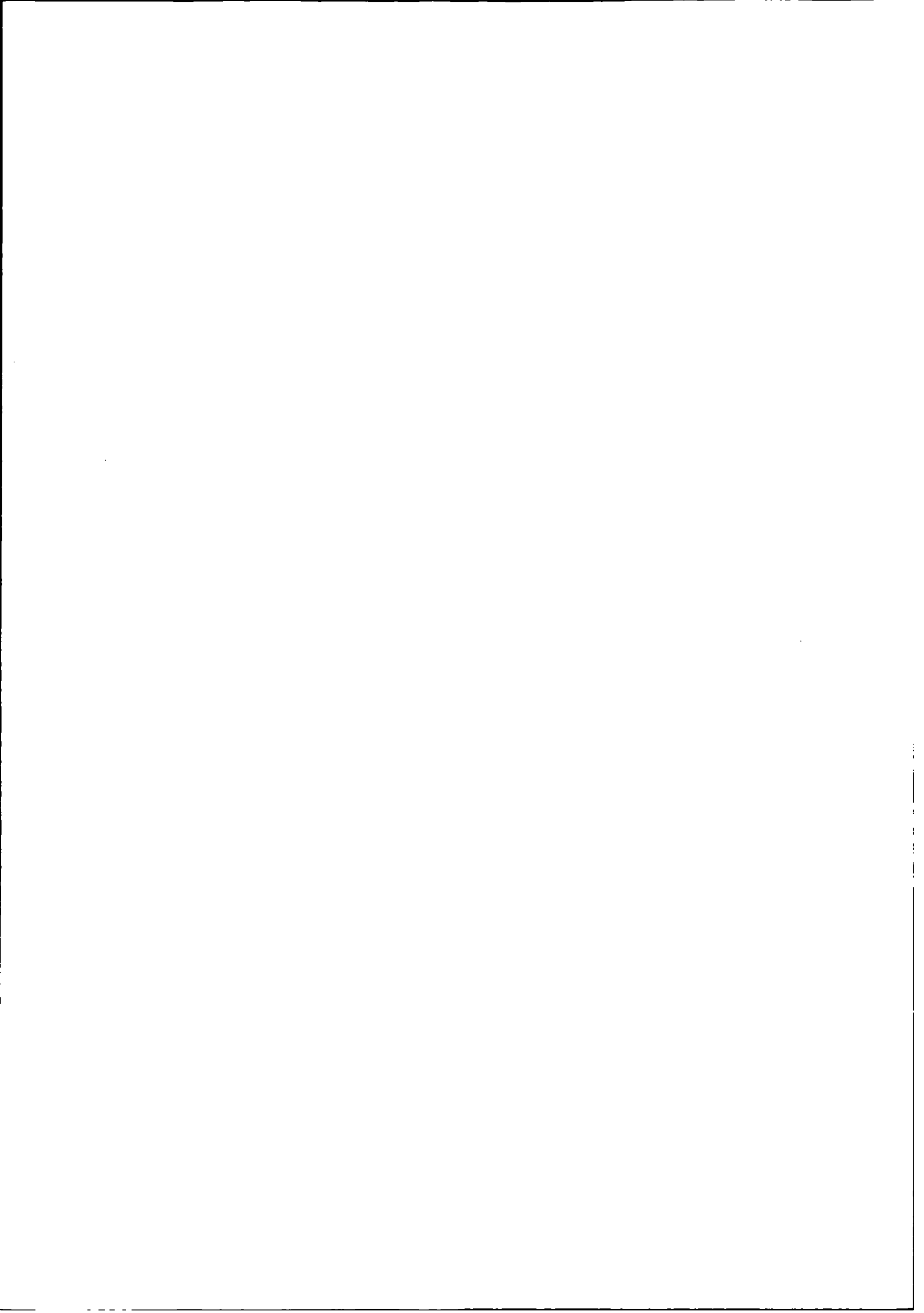


Reference No. 7.5

QUARTERLY ESTIMATES OF NATIONAL INCOME AND EXPENDITURE  
JUNE QUARTER 1975

CONTENTS

<i>Table</i>		<i>Page</i>
..	Foreword	3
..	Current trends in main aggregates, June quarter 1975	5
1.	Domestic production account	10
2.	Expenditure on gross domestic product at average 1966-67 prices	11
3.	Domestic production account – seasonally adjusted	12
4.	Expenditure on gross domestic product at average 1966-67 prices – seasonally adjusted	14
5.	National capital account	16
6.	Increase in stocks	17
7.	Gross fixed capital expenditure and increase in stocks at average 1966-67 prices	17
8.	Gross fixed capital expenditure and increase in stocks – seasonally adjusted	18
9.	Gross fixed capital expenditure and increase in stocks at average 1966-67 prices – seasonally adjusted	19
10.	Private final consumption expenditure	20
11.	Private final consumption expenditure – seasonally adjusted	20
12.	National income and outlay account	22
13.	Overseas transactions account	22
14.	Households (including unincorporated enterprises) income and outlay account	23
15.	Household disposable income	23
16.	Income of farm unincorporated enterprises	24
17.	General government income and outlay account	25
18.	General government income and outlay account – Australian Government's authorities	26
19.	General government income and outlay account – State and local authorities	27
20.	Taxes, fees, fines, etc.	28
21.	General government cash benefits to persons	28
22.	General government income from public enterprises	29
23.	Government final consumption expenditure	30
24.	Gross fixed capital expenditure – public authorities	31
25.	Gross fixed capital expenditure – public enterprises	31
<i>Graph</i>		
1.	Gross domestic product and related series	13
2.	Gross domestic product and related series at average 1966-67 prices	15
3.	Components of gross fixed capital expenditure	18
4.	Components of gross fixed capital expenditure at average 1966-67 prices	19
5.	Private final consumption expenditure – major components	21



## FOREWORD

### General

This publication provides estimates of the components of gross domestic product and national expenditure and supporting tables for June quarter 1975, together with comparative estimates for the nine previous quarters and the four years 1971-72 to 1974-75. Preliminary quarterly estimates of the Domestic Production Account were released earlier in a preliminary statement (Reference No. 7.6). Some of the estimates given in that statement are revised in this bulletin.

Estimates have been revised in accordance with revised annual estimates included in Budget Paper No. 11, *National Income and Expenditure, 1974-75* (Reference No. 7.8).

The definitions and concepts used in this publication are those used in both the forthcoming issue *Australian National Accounts, National Income and Expenditure, 1973-74* (Reference No. 7.1) and the Budget Paper No. 11, *National Income and Expenditure, 1974-75*.

Items in this bulletin are briefly described in the appendix to the December quarter 1974 issue of this bulletin.

### Interpretation of quarterly estimates

Estimating for a period less than one year presents special problems in that it is often difficult to adhere strictly to definitions of concepts used in annual estimates. The measurement of income for a period is particularly difficult since it is not always possible to match the value of production for a quarter with the cost incurred in that production. This problem occurs, for example, in estimating the income of farm unincorporated enterprises in each quarter, and results in considerable variation of the estimates for this series, and for gross farm product, from quarter to quarter. Difficulties are also experienced in obtaining detailed data for short periods and in preparing consistent estimates from various sources where different accounting procedures and periods are used.

These problems inevitably affect the consistency and reliability of the current-price estimates, and similarly affect the constant-price estimates based on the current-price estimates. Accordingly these factors as well as the approximations and assumptions necessarily made in the revaluation of flows at constant prices should be borne in mind when interpreting or using the estimates, for example in attempting to draw precise quantitative inferences relating to quarter-to-quarter changes in gross domestic product or its components, or in productivity. It is also difficult to draw valid inferences as to quarter-to-quarter changes in prices from the price relationships implied by dividing estimates at current prices for successive quarters by estimates at 1966-67 prices. Such measures of implied price change have current, not fixed, weights and are therefore affected by changes in the physical composition of the aggregates in question as well as by price changes. Changes in composition and uncertainties in seasonal adjustment may have a severely distorting effect on such comparisons.

Analysis of trends therefore requires allowance for these uncertainties in estimation. The effects are in some measure indicated by the change in the statistical discrepancy for corresponding periods. Uncertainty in trends arises also from the likelihood of revisions as more information becomes available and from the irregularity of short-term movements. The inclusion of the statistical discrepancy on the expenditure side of the accounts implies nothing in regard to the relative accuracy of the estimates of gross domestic product and national expenditure. As household and other savings are also estimated as balancing items in their respective accounts, care should be exercised in their interpretation.

Estimates of national income and expenditure are necessarily prepared from a wide range of statistical information, some of which is available quickly and some only with a delay of several years. For this reason most figures should be regarded as subject to revision as more complete and more accurate information becomes available. The revisions will be of two main types — those made to the most recent quarters as firmer quarterly or monthly data comes to hand and those which are a consequence of revisions to annual totals and are distributed to the quarters approximately in accordance with existing quarterly patterns.

## Seasonal adjustment

As most series are affected to some extent by seasonal factors, allowance should be made for normal seasonal variation. In Tables 3, 4, 8, 9 and 11 'seasonally adjusted' values are presented for selected series. Series which show substantial irregularities in the original or adjusted series should be treated with some reserve. As different methods of seasonal adjustment tend to produce different results, it is necessary to bear in mind the methods by which they have been derived and the limitations to which those methods are subject.

The general methods used in the Bureau for making seasonal adjustments are described in *Seasonally Adjusted Indicators, 1975* (Reference No. 1.10). However, special methods have been used to adjust some of the components of gross farm product which were not amenable to seasonal adjustment by the usual methods. In the seasonally adjusted estimates, the estimated value of production of wheat, other grain and sugar cane and the quantity of wool production, for any financial year, are distributed equally over the four quarters of the year ended June. One effect of these methods is that changes in the annual production of these commodities first enter into the seasonally adjusted figures in the September quarter. As far as possible the constant-price estimates have been adjusted using methods similar to those for the corresponding current-price estimates.

## Rounding of figures

Although percentage changes are given to one decimal place in the section *Current Trends in Main Aggregates*, this does not imply that they can be regarded as accurate to the last digit shown. The figures after the decimal point are given to avoid distortions which may occur in rounding off the figures to the nearest half or whole number.

The procedures used in preparing this bulletin may occasionally result in rounding differences between figures in this bulletin and corresponding figures in other publications.

Discrepancies between totals and sums of components in the tables are due to rounding.

**J. G. MILLER**  
Acting Commonwealth Statistician

Australian Bureau of Statistics  
Canberra. A.C.T. 2600

NOTE. Inquiries concerning these statistics may be made in Canberra by telephoning Mr R.V. Harvey on 63 9111 extension 2128 or, in each State capital, by telephoning the office of the Australian Bureau of Statistics.

**CURRENT TRENDS IN MAIN AGGREGATES  
JUNE QUARTER 1975**

Except where otherwise stated estimates and percentage changes in these notes refer to seasonally adjusted estimates. Changes in individual quarters should not be interpreted in isolation and without reference to changes over longer periods and attention is also drawn to remarks made in the foreword.

**PRODUCT**

In the June quarter, gross domestic product at current prices increased by 5.8 per cent and was 17.6 per cent higher than in the previous June quarter. Gross domestic product at constant prices rose by 3.1 per cent in the June quarter and was 1.8 per cent higher than a year earlier.

Gross non-farm product at current prices increased by 6.3 per cent in the June quarter and was 19.8 per cent higher than a year earlier. Gross non-farm product at constant prices rose by 3.0 per cent in the June quarter and was 0.1 per cent higher than a year earlier. Gross farm product at current prices fell by 3.4 per cent in the June quarter and was 10.6 per cent less than in the June quarter of 1974.

Comparing the full year 1974-75 with the year 1973-74, gross domestic product was 15.6 per cent higher at current prices but 1.8 per cent lower at constant prices, gross non-farm product was 19.1 per cent higher at current prices but 2.6 per cent lower at constant prices and gross farm product was 21.3 per cent lower at current prices but 7.7 per cent higher at constant prices.

	<i>Percentage change from preceding quarter</i>									<i>June qtr 1975 on June qtr 1974</i>
	<i>1972-73</i>		<i>1973-74</i>			<i>1974-75</i>				
	<i>June</i>	<i>Sept.</i>	<i>Dec.</i>	<i>Mar.</i>	<i>June</i>	<i>Sept.</i>	<i>Dec.</i>	<i>Mar.</i>	<i>June</i>	
<b>Current Prices</b>										
Gross domestic product	3.6	7.9	3.4	3.3	2.6	4.3	5.6	1.0	5.8	17.6
Gross farm product	-7.9	41.4	-2.8	-10.6	-9.2	-7.4	..	..	-3.4	-10.6
Gross non-farm product	4.7	5.2	4.1	4.8	3.7	5.2	6.0	1.1	6.3	19.8
<b>Constant Prices</b>										
Gross domestic product	0.9	2.2	1.0	1.4	-2.4	-3.6	2.6	-0.2	3.1	1.8
Gross farm product	-5.4	8.9	0.2	-8.2	-1.8	0.5	11.5	6.2	3.4	23.2
Gross non-farm product	1.5	1.6	1.1	2.2	-2.5	-3.9	1.9	-0.8	3.0	0.1

## INCOME MOVEMENTS

(NOTE. Income series can be expressed only at current prices)

The growth in wages, salaries and supplements continued to moderate in the June quarter, when the increase was only 1.1 per cent following increases of 10.8 per cent, 4.9 per cent and 3.2 per cent in the previous three quarters. Compared with the previous June quarter wages, salaries and supplements were 21.3 per cent higher while for the full year 1974-75 they had risen by 27.9 per cent on the level for the year 1973-74.

The gross operating surplus of companies, which has been extremely variable over the last four quarters, is estimated to have increased by 37.3 per cent in the June quarter, following a decrease of 14.6 per cent in the March quarter, and was 16.3 per cent higher than in the previous June quarter. However, comparing the full year 1974-75 with the year 1973-74, the gross operating surplus of companies fell by 12.3 per cent.

The gross operating surplus of all other trading enterprises rose by 2.9 per cent in the June quarter following a 3.6 per cent increase in the March quarter.

The gross operating surplus of all non-farm enterprises rose by 17.3 per cent in the June quarter and was 14.8 per cent above the June quarter 1974.

	<i>Percentage change from preceding quarter</i>									<i>June qtr 1975 on June qtr 1974</i>
	<i>1972-73</i>			<i>1973-74</i>			<i>1974-75</i>			
	<i>June</i>	<i>Sept.</i>	<i>Dec.</i>	<i>Mar.</i>	<i>June</i>	<i>Sept.</i>	<i>Dec.</i>	<i>Mar.</i>	<i>June</i>	
Wages, salaries and supplements	5.4	6.1	5.1	5.4	7.2	10.8	4.9	3.2	1.1	21.3
Gross operating surplus of trading enterprises –										
Companies	5.3	7.9	-3.3	2.8	-10.7	-20.0	24.1	-14.6	37.3	16.3
Other	-0.3	14.2	0.3	-1.2	-1.0	-1.9	0.6	3.6	2.9	5.1
Non-farm enterprises	4.9	4.6	..	4.0	-2.9	-8.0	10.4	-3.6	17.3	14.8

Tables 14 and 15 show the derivation of household income and household disposable income from wages, salaries and supplements and income of unincorporated enterprises and from dwellings, together with interest and dividends and other income transfers received. Seasonally adjusted estimates for these items are not available. Compared with the June quarter 1974 household income was higher by 19.8 per cent, income tax payable by 21.3 per cent and household disposable income by 20.0 per cent. The estimates of income tax payable are based on the annual rates of taxation applicable to a financial year. For the financial year 1974-75, the estimates of income tax payable take into account the reductions made in the 1974-75 Budget and those announced in November and hence do not reflect the fact that PAYE deductions were higher than the annual rates in the early part of the financial year and lower than the annual rates in the second half of the financial year.

## FINAL CONSUMPTION EXPENDITURE

### Private Final Consumption

Private final consumption expenditure at current prices rose by 5.7 per cent in the June quarter and was 19.8 per cent higher than in June quarter 1974. At constant prices there was a rise of 2.3 per cent in the quarter and a 3.2 per cent increase over the June quarter 1974.

Preliminary figures for the June quarter show increases in all current-price components. After allowing for price changes there were significant increases at constant prices for the following components; food, cigarettes, tobacco and alcoholic drinks and household durables; while purchase of motor vehicles maintained the higher level of the March quarter 1975. On 28 January reductions of sales tax on motor vehicles were announced to stimulate sales. The tax on private vehicles was reduced from 27½ per cent to 15 per cent, the reduced rates to operate for three months after which the former rates will be progressively restored by 1 September. Present estimates indicate that the proportion of household disposable income devoted to consumption in the latest quarter was about the same as in the corresponding quarter of the previous year (85.1 per cent in June quarter 1975 compared to 85.2 per cent in June quarter 1974). However it should be noted that the estimates of household income are after allowing for income tax at the rates applicable to the year 1974-75 as a whole, whereas PAYE deductions were reduced from the beginning of January.

### Government Final Consumption

Government final consumption expenditure at current prices rose by 0.3 per cent in the June quarter and was 36.4 per cent higher than a year earlier. At constant prices there was a fall of 0.9 per cent in the June quarter but an 11.2 per cent increase over the June quarter 1974. Comparing the full year 1974-75 with the year 1973-74 government final consumption expenditure increased by 33.7 per cent at current prices and by 5.3 per cent at constant prices.



Final consumption expenditure	Percentage change from preceding quarter									June qtr 1975 on June qtr 1974
	1972-73		1973-74			1974-75				
	June	Sept.	Dec.	Mar.	June	Sept.	Dec.	Mar.	June	
<b>PRIVATE</b>										
Current Prices										
Household durables	5.8	7.7	6.0	6.2	8.3	0.9	2.5	3.2	6.8	14.0
Purchase of motor vehicles	5.7	6.0	3.1	-8.2	13.4	9.5	0.2	2.4	6.6	19.7
Total durables	5.8	7.0	4.9	0.6	10.1	4.0	1.7	2.9	6.7	16.1
Food	4.6	3.7	4.4	5.4	4.9	3.0	0.1	2.5	8.0	14.1
Cigarettes, tobacco and alcoholic drinks	5.8	0.5	4.1	2.5	4.8	3.5	0.3	7.1	6.9	18.8
Clothing, footwear and drapery	4.2	6.1	1.9	9.5	0.6	3.7	-2.3	6.9	1.0	9.4
Rent	3.3	3.6	5.7	3.1	4.5	6.5	5.9	5.5	5.2	25.3
Other goods and services	4.1	3.2	3.3	4.7	5.0	6.4	5.5	5.7	5.3	24.9
Total non-durables	4.3	3.4	3.8	4.9	4.4	5.1	3.1	5.3	5.5	20.4
<b>Total</b>	<b>4.5</b>	<b>3.8</b>	<b>4.0</b>	<b>4.3</b>	<b>5.1</b>	<b>5.0</b>	<b>2.9</b>	<b>5.0</b>	<b>5.7</b>	<b>19.8</b>
Constant Prices										
<b>Total</b>	<b>1.9</b>	<b>0.8</b>	<b>1.0</b>	<b>1.3</b>	<b>0.8</b>	<b>-0.1</b>	<b>-1.0</b>	<b>2.0</b>	<b>2.3</b>	<b>3.2</b>
<b>GOVERNMENT</b>										
Current prices	10.5	2.1	8.2	6.9	-0.6	15.2	6.3	10.9	0.3	36.4
Constant prices	4.8	-0.4	3.0	1.2	-7.6	8.6	0.3	3.0	-0.9	11.2

### CAPITAL EXPENDITURE

In the June quarter, total gross fixed capital expenditure increased by 8.4 per cent at current prices and by 5.6 per cent at constant prices. Private capital expenditure increased by 7.9 per cent at current prices and by 5.2 per cent at constant prices. Although the estimates for the most recent quarters should be regarded as tentative private capital expenditure on dwellings in the June quarter increased at current prices by 6.1 per cent and at constant prices by 3.9 per cent after having declined for several quarters. Private expenditure on other building and construction, at constant prices, continued to decline with a fall of 1.7 per cent in the June quarter. There was a recovery in private capital expenditure on other capital equipment with the constant price estimate increasing by 8.4 per cent in the June quarter. Public capital expenditure at current prices showed an increase of 9.1 per cent on the previous quarter to be 37.6 per cent higher than a year earlier. At constant prices public capital expenditure was 6.1 per cent higher than in the March quarter 1975 and 14.9 per cent higher than the previous June quarter.

Gross fixed capital expenditure	Percentage change from preceding quarter									June qtr 1975 on June qtr 1974
	1972-73		1973-74			1974-75				
	June	Sept.	Dec.	Mar.	June	Sept.	Dec.	Mar.	June	
<b>Current Prices</b>										
Private										
Dwellings	5.9	7.7	4.6	3.0	0.9	-2.1	-2.9	-1.4	6.1	-0.6
Other building and construction	7.2	2.5	8.5	3.8	2.7	5.2	3.4	5.2	..	14.5
All other	6.4	7.4	10.0	1.3	6.4	3.6	-1.0	5.3	12.5	21.4
Total private	6.4	6.5	7.9	2.3	3.8	2.1	-0.7	3.3	7.9	13.1
Public enterprises	-0.7	11.2	0.4	(a)5.7	5.8	-0.9	25.2	8.2	-2.5	30.8
General government	5.9	-2.9	6.4	10.5	8.1	9.9	8.8	-0.9	21.6	44.1
<b>Total</b>	<b>5.1</b>	<b>5.6</b>	<b>6.4</b>	<b>4.2</b>	<b>4.9</b>	<b>3.0</b>	<b>5.2</b>	<b>3.4</b>	<b>8.4</b>	<b>21.4</b>
<b>Constant Prices</b>										
Private										
Dwellings	2.0	2.0	-0.2	-3.4	-6.3	-8.1	-6.1	-4.0	3.9	-14.0
Other building and construction	5.5	-1.6	6.1	..	-6.9	-1.2	-2.1	..	-1.7	-4.9
All other	4.6	5.7	9.8	-0.8	-1.1	0.4	-8.8	0.8	8.4	0.1
Total private	4.0	3.1	5.9	-1.5	-3.8	-2.3	-6.8	-0.7	5.2	-4.8
Public	1.6	1.0	-0.6	(a)6.2	-0.3	-3.8	11.6	0.8	6.1	14.9
<b>Total</b>	<b>3.2</b>	<b>2.4</b>	<b>3.8</b>	<b>0.9</b>	<b>-2.6</b>	<b>-2.8</b>	<b>-0.7</b>	<b>-0.1</b>	<b>5.6</b>	<b>1.8</b>

(a) Includes substantial imports of transport equipment.

### OVERSEAS TRANSACTIONS

Exports of goods and services rose in the June quarter by 4.8 per cent at current prices and 3.5 per cent at constant prices. Imports rose marginally in the June quarter by 0.6 per cent at current prices and 1.3 per cent at constant prices. Compared with the corresponding quarter of 1974, imports at current prices were higher by 2.3 per cent but were lower by 17.2 per cent at constant prices while exports were higher by 27.4 per cent at current prices and by 12.7 per cent at constant prices.

Exports and imports of goods and services	Percentage change from preceding quarter									June qtr 1975 on June qtr 1974
	1972-73		1973-74			1974-75				
	June	Sept.	Dec.	Mar.	June	Sept.	Dec.	Mar.	June	
<b>Current prices</b>										
Exports	-6.9	8.4	2.2	-0.8	6.8	13.1	4.6	2.8	4.8	27.4
Imports	5.3	11.1	8.4	13.3	17.7	11.7	2.2	-10.9	0.6	2.3
<b>Constant prices</b>										
Exports	-6.1	2.8	-2.0	-3.9	0.6	7.7	-2.5	3.6	3.5	12.7
Imports	7.2	6.4	7.4	6.0	6.2	8.2	-9.0	-17.0	1.3	-17.2

Other overseas transactions (Table 13) are not shown on a seasonally adjusted basis in this bulletin. On an unadjusted basis, there was a surplus on goods and services of \$217 million, net income paid overseas (on the national accounts basis) was \$72 million and net transfers to overseas were \$40 million. The balance on these current transactions resulted in net lending to overseas of \$105 million this quarter compared with a balance of minus \$458 million in June quarter 1974. (The concept of net lending includes additions to overseas monetary reserves). Seasonally adjusted current account items are shown in the bulletin *Balance of Payments* (Reference No. 8.2).

Substantial funds received in the March and June quarters in respect of Darwin cyclone claims payable by overseas re-insurers have been included in transfers from overseas and these receipts result in abnormally low figures for net transfers to overseas. This revises the treatment adopted in the March quarter bulletin (where they were provisionally treated as a negative element of net lending to overseas.)

**TABLES AND GRAPHS**

TABLE 1 - DOMESTIC PRODUCTION ACCOUNT

\$ MILLION

	YEAR				QUARTERS ENDED-									
	1971-72	1972-73	1973-74	1974-75	1972-73		1973-74				1974-75			
					MAR.	JUNE	SEPT.	DEC.	MAR.	JUNE	SEPT.	DEC.	MAR.	JUNE
FINAL CONSUMPTION EXPENDITURE -														
PRIVATE	22230	24887	29136	34758	6032	5521	6782	7559	7077	7717	8125	8926	8456	9250
GOVERNMENT	4754	5429	6733	9000	1258	1587	1495	1734	1643	1960	1990	2262	2222	2536
GROSS FIXED CAPITAL EXPENDITURE -														
PRIVATE	6285	6465	7955	8878	1468	1751	1849	2097	1833	2176	2163	2268	1985	2462
PUBLIC ENTERPRISES	1747	1751	1992	2605	400	467	454	488	470	580	504	676	668	757
GENERAL GOVERNMENT	1554	1727	1993	2778	372	535	388	498	450	657	543	713	577	945
INCREASE IN STOCKS	-115	-328	1657	815	-137	-166	-67	805	958	-39	435	1240	-62	-857
STATISTICAL DISCREPANCY	-220	253	934	-217	164	-307	634	291	88	-79	40	185	20	-462
GROSS NATIONAL EXPENDITURE	36235	40194	50400	58518	9557	10418	11535	13473	12519	12873	13849	16269	13867	14632
EXPORTS OF GOODS AND SERVICES	5637	6947	7608	9855	1865	1735	1857	2011	1909	2032	2266	2526	2478	2585
LESS IMPORTS OF GOODS AND SERVICES	5238	5360	7649	10347	1348	1457	1658	1744	1938	2309	2686	2667	2325	2368
EXPENDITURE ON GROSS DOMESTIC PRODUCT	36634	41782	50558	58426	10074	10636	11733	13739	12489	12596	13429	16128	14020	14849
WAGES SALARIES AND SUPPLEMENTS	20837	22384	27502	35177	5389	6022	6253	6974	6682	7593	8215	9204	8547	9211
GROSS OPERATING SURPLUS -														
TRADING ENTERPRISES -														
COMPANIES	5079	5026	6740	5912	1333	1529	1813	1964	1505	1458	1289	1790	1139	1694
UNINCORPORATED ENTERPRISES	4715	5772	7405	6733										
DWELLINGS OWNED BY PERSONS	2094	2398	2839	3510	2329	2054	2678	3592	3035	2186	2614	3665	2863	2235
PUBLIC ENTERPRISES	1220	1268	1247	1135										
FINANCIAL ENTERPRISES	661	792	829	911										
LESS IMPUTED BANK SERVICE CHARGE	861	1085	1351	1525	-75	-81	-123	-120	-133	-146	-153	-168	-194	-189
GROSS DOMESTIC PRODUCT AT FACTOR COST	32345	37555	45211	51753	8976	9524	10621	12410	11089	11191	11955	14491	12355	12951
INDIRECT TAXES LESS SUBSIDIES	3689	4227	5347	6573	1098	1172	1112	1329	1400	1505	1474	1637	1665	1898
GROSS DOMESTIC PRODUCT	36634	41782	50558	58426	10074	10636	11733	13739	12489	12596	13429	16128	14020	14849
GROSS FARM PRODUCT	2242	3052	4448	3500	844	939	908	1691	1379	470	628	1564	1003	305
GROSS NON-FARM PRODUCT	34392	38730	46110	54926	9230	10157	10825	12048	11110	12126	12801	14564	13017	14544

TABLE 2 - EXPENDITURE ON GROSS DOMESTIC PRODUCT AT AVERAGE 1966-67 PRICES

\$ MILLION

	YEAR				QUARTERS ENDED-									
	1971-72	1972-73	1973-74	1974-75	1972-73		1973-74			1974-75				
					MAR.	JUNE	SEPT.	DEC.	MAR.	JUNE	SEPT.	DEC.	MAR.	JUNE
FINAL CONSUMPTION EXPENDITURE-														
PRIVATE	17951	19044	20044	20485	4589	4873	4890	5282	4813	5059	5041	5315	4906	5223
GOVERNMENT	3267	3433	3656	3850	816	964	890	954	889	923	930	971	924	1026
GROSS FIXED CAPITAL EXPENDITURE-														
PRIVATE	4999	4871	5349	4899	1104	1309	1304	1455	1231	1359	1277	1260	1068	1294
PUBLIC	2605	2541	2584	2842	554	708	580	653	603	748	587	744	652	859
INCREASE IN STOCKS	-98	-177	1057	556	-38	-99	-97	488	639	25	295	692	-18	-412
STATISTICAL DISCREPANCY	-164	208	650	-105	122	-220	442	199	59	-49	24	103	12	-244
GROSS NATIONAL EXPENDITURE	28560	29920	33340	32527	7147	7536	8010	9031	8235	8065	8153	9086	7543	7746
EXPORTS OF GOODS AND SERVICES	5501	5715	5483	5930	1469	1380	1376	1433	1334	1340	1404	1457	1461	1508
LESS IMPORTS OF GOODS AND SERVICES	4764	4956	6417	6540	1256	1374	1486	1547	1632	1752	1945	1720	1420	1455
EXPENDITURE ON GROSS DOMESTIC PRODUCT	29298	30679	32407	31917	7359	7542	7900	8916	7937	7654	7612	8822	7585	7798
GROSS FARM PRODUCT	2714	2390	2506	2698	608	352	510	969	739	289	452	1059	762	425
GROSS NON-FARM PRODUCT	26584	28290	29901	29119	6751	7190	7391	7947	7198	7365	7160	7763	6822	7374

TABLE 3 - DOMESTIC PRODUCTION ACCOUNT - SEASONALLY ADJUSTED

\$ MILLION

	QUARTERS ENDED-													
	1971-72		SEPT.	1972-73		JUNE	1973-74		JUNE	1974-75				
	MAR.	JUNE		DEC.	MAR.		SEPT.	DEC.		MAR.	SEPT.	DEC.	MAR.	JUNE
FINAL CONSUMPTION EXPENDITURE-														
PRIVATE	5591	5765	5936	6078	6306	6588	6841	7113	7415	7798	8185	8425	8843	9345
GOVERNMENT	1229	1218	1263	1297	1360	1503	1534	1660	1774	1764	2033	2162	2398	2406
GROSS FIXED CAPITAL EXPENDITURE-														
PRIVATE	1514	1601	1556	1566	1622	1726	1838	1983	2029	2107	2152	2137	2207	2382
PUBLIC ENTERPRISES	424	439	467	429	430	427	475	477	504	533	528	661	715	697
GENERAL GOVERNMENT	394	380	411	430	427	452	439	467	516	558	613	667	661	804
INCREASE IN STOCKS	-92	-78	-168	-200	15	102	99	402	651	396	683	625	-135	-362
STATISTICAL DISCREPANCY	-28	-129	21	133	91	47	518	146	17	314	-157	83	-139	17
GROSS NATIONAL EXPENDITURE	9032	9196	9486	9733	10251	10845	11744	12248	12910	13470	14037	14760	14550	15289
EXPORTS OF GOODS AND SERVICES	1425	1505	1542	1772	1879	1749	1896	1938	1922	2052	2320	2426	2495	2614
LESS IMPORTS OF GOODS AND SERVICES	1303	1236	1224	1309	1381	1454	1615	1750	1982	2333	2606	2664	2374	2387
EXPENDITURE ON GROSS DOMESTIC PRODUCT	9154	9465	9804	10196	10749	11140	12025	12436	12850	13189	13751	14521	14671	15516
WAGES, SALARIES AND SUPPLEMENTS	5030	5174	5321	5465	5666	5971	6336	6662	7019	7524	8335	8745	9027	9127
GROSS OPERATING SURPLUS-														
TRADING ENTERPRISES-														
COMPANIES	1250	1287	1397	1487	1542	1623	1751	1694	1741	1554	1243	1543	1317	1808
UNINCORPORATED ENTERPRISES	)	)	)	)	)	)	)	)	)	)	)	)	)	)
DWELLINGS OWNED BY PERSONS	) 1995	) 2068	) 2170	) 2288	) 2521	) 2514	) 2871	) 2880	) 2844	) 2816	) 2762	) 2778	) 2877	) 2960
PUBLIC ENTERPRISES	)	)	)	)	)	)	)	)	)	)	)	)	)	)
FINANCIAL ENTERPRISES	)	)	)	)	)	)	)	)	)	)	)	)	)	)
LESS IMPUTED BANK SERVICE CHARGE	) -53	) -57	) -64	) -66	) -75	) -88	) -115	) -120	) -134	) -153	) -154	) -168	) -195	) -197
GROSS DOMESTIC PRODUCT AT FACTOR COST	8222	8472	8824	9174	9654	10020	10843	11116	11470	11741	12186	12898	13026	13698
INDIRECT TAXES LESS SUBSIDIES	932	993	980	1022	1095	1120	1182	1320	1380	1448	1565	1623	1645	1818
GROSS DOMESTIC PRODUCT	9154	9465	9804	10196	10749	11140	12025	12436	12850	13189	13751	14521	14671	15516
GROSS FARM PRODUCT	558	593	622	711	920	847	1198	1165	1042	946	876	876	876	846
GROSS NON-FARM PRODUCT	8596	8872	9182	9485	9829	10293	10827	11271	11808	12243	12875	13645	13795	14670

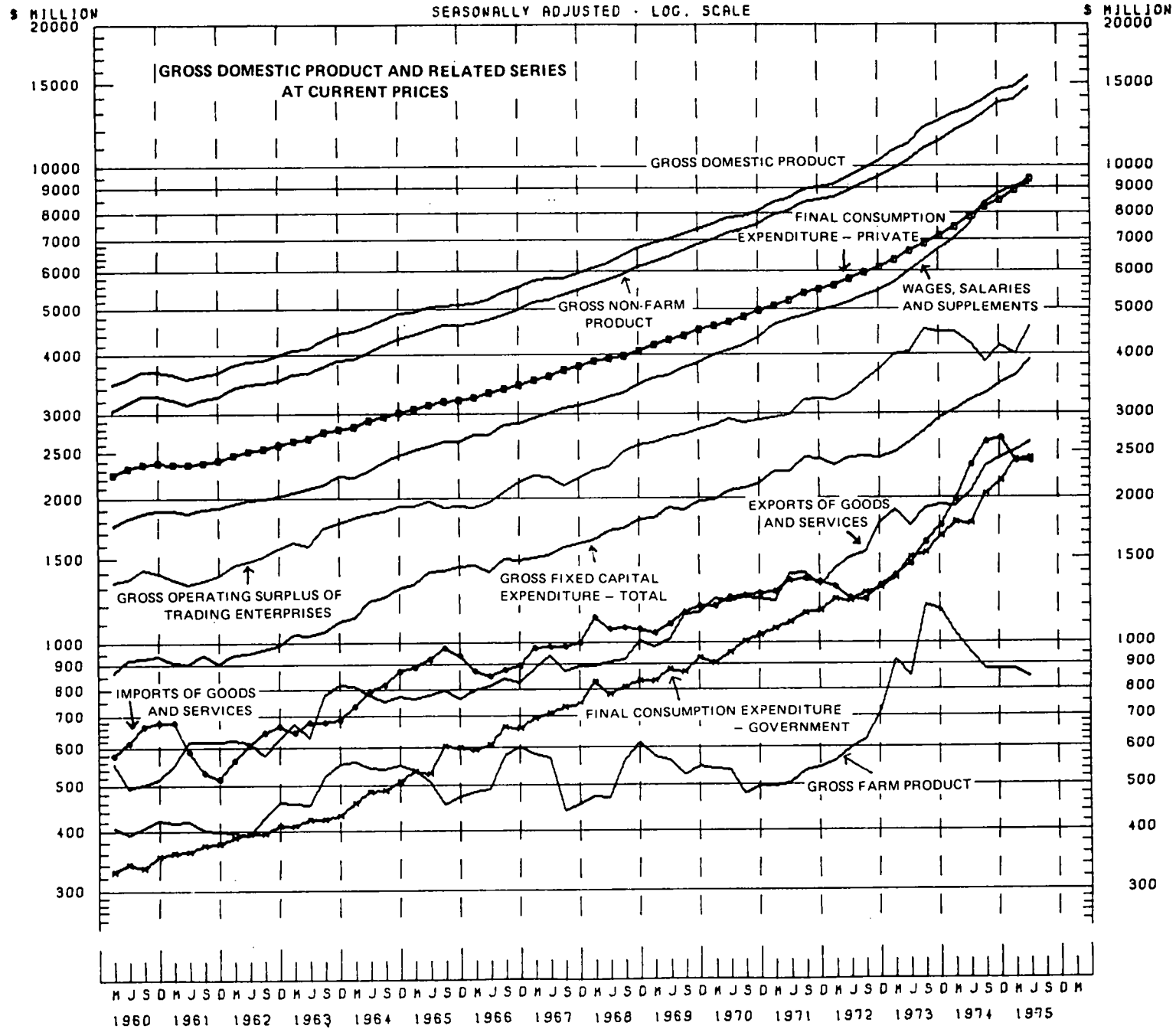


TABLE 4 - EXPENDITURE ON GROSS DOMESTIC PRODUCT AT AVERAGE 1966-67 PRICES - SEASONALLY ADJUSTED

\$MILLION

	QUARTERS ENDED -													
	1971-72		SEPT.	1972-73		JUNE	1973-74		JUNE	1974-75				
	MAR.	JUNE		MAR.	DEC.		SEPT.	DEC.		MAR.	SEPT.	DEC.	MAR.	JUNE
FINAL CONSUMPTION EXPENDITURE-														
PRIVATE	4478	4555	4630	4718	4805	4898	4935	4985	5049	5088	5082	5031	5132	5252
GOVERNMENT	835	814	821	831	869	911	907	934	945	873	948	951	980	971
GROSS FIXED CAPITAL EXPENDITURE-														
PRIVATE	1193	1243	1200	1193	1215	1263	1302	1379	1359	1308	1278	1191	1183	1245
PUBLIC	643	628	670	634	614	624	630	626	665	663	638	712	718	762
INCREASE IN STOCKS	-95	-90	-129	-149	-9	108	33	244	472	304	422	352	-83	-143
STATISTICAL DISCREPANCY	-3	-61	-45	110	100	44	258	116	56	205	-173	28	-28	26
GROSS NATIONAL EXPENDITURE	7052	7088	7148	7336	7595	7848	8065	8285	8546	8441	8195	8264	7902	8113
EXPORTS OF GOODS AND SERVICES	1389	1414	1392	1473	1469	1379	1418	1389	1335	1343	1447	1411	1462	1513
LESS IMPORTS OF GOODS AND SERVICES	1168	1117	1122	1194	1276	1368	1455	1562	1655	1758	1902	1731	1437	1455
EXPENDITURE ON GROSS DOMESTIC PRODUCT	7273	7385	7418	7615	7788	7859	8028	8112	8226	8026	7740	7944	7927	8171
GROSS FARM PRODUCT	677	691	576	582	630	596	649	650	597	586	589	657	698	722
GROSS NON-FARM PRODUCT	6596	6694	6842	7033	7158	7263	7379	7462	7629	7440	7151	7287	7229	7449



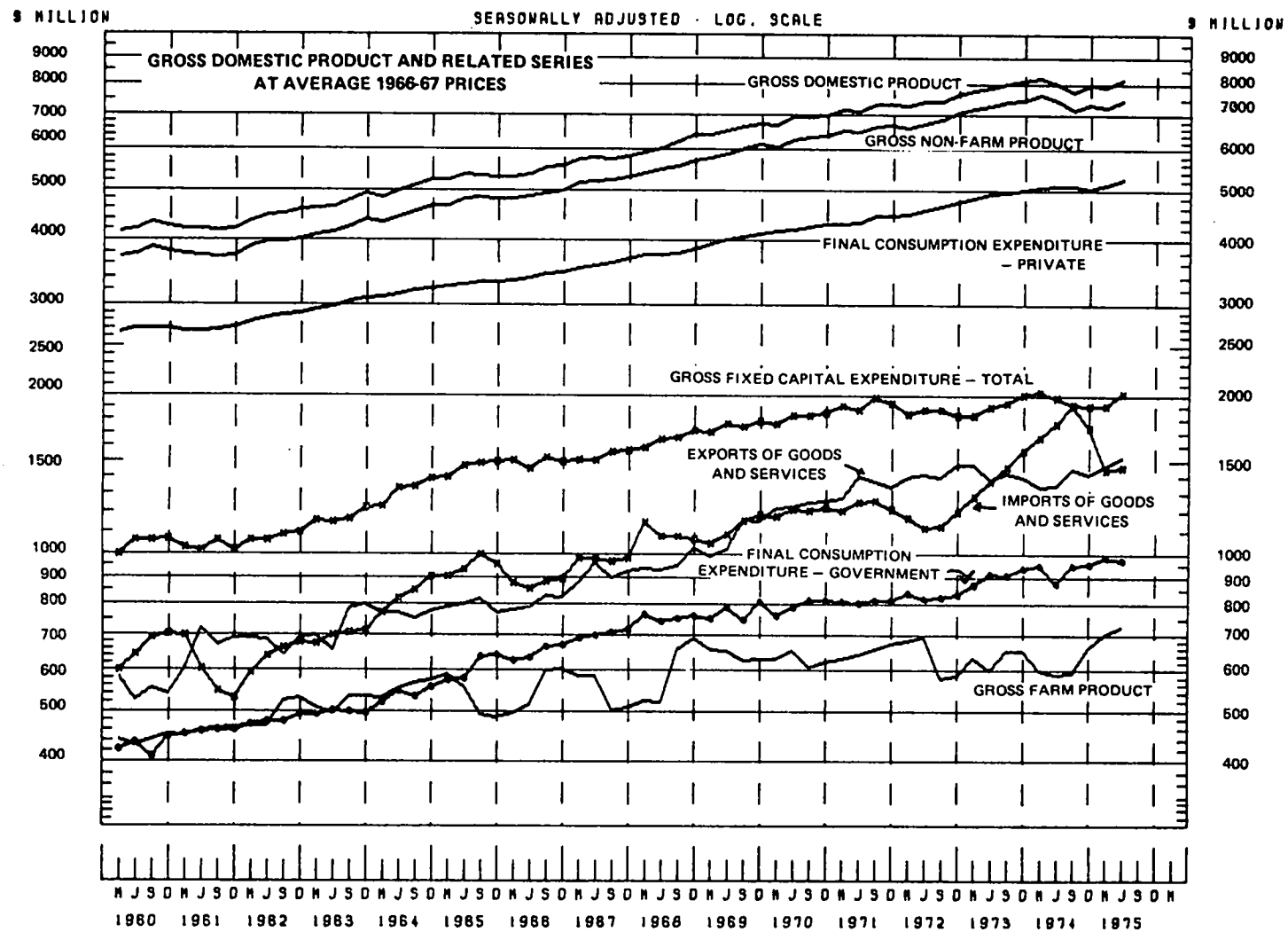


TABLE 5 - NATIONAL CAPITAL ACCOUNT

\$ MILLION

	YEAR				QUARTERS ENDED-									
	1971-72	1972-73	1973-74	1974-75	1972-73		1973-74		1974-75					
					MAR.	JUNE	SEPT.	DEC.	MAR.	JUNE	SEPT.	DEC.	MAR.	JUNE
DEPRECIATION ALLOWANCES	3078	3326	3640	3930	837	847	890	907	920	923	950	989	975	1016
OTHER SAVING (A)	1134	1715	2148	10	228	-1664	1828	1739	244	-1664	1043	921	456	-2408
HOUSEHOLD SAVING	2488	3700	5251	7073	832	1093	857	1713	1351	1342	1256	2507	1681	1618
GENERAL GOVERNMENT SURPLUS ON CURRENT TRANSACTIONS	2410	2072	3014	3078	693	1549	-260	-57	1094	2237	-58	305	107	2725
FINANCE OF GROSS ACCUMULATION	9111	10813	14063	14091	2590	2426	3314	4302	3609	2838	3201	4721	3219	2950
GROSS FIXED CAPITAL EXPENDITURE-PRIVATE-														
DWELLINGS	1755	2089	2582	2577	511	575	640	541	627	574	681	633	593	670
OTHER BUILDING AND CONSTRUCTION	1455	1361	1592	1866	281	371	363	441	349	439	442	513	410	501
ALL OTHER	3075	3015	3781	4435	676	835	846	1015	857	1163	1040	1122	982	1291
TOTAL PRIVATE	6285	6465	7955	8878	1468	1781	1849	2097	1833	2176	2163	2268	1985	2462
PUBLIC ENTERPRISES	1747	1751	1992	2605	400	467	454	488	470	580	504	676	668	757
GENERAL GOVERNMENT	1554	1727	1993	2778	372	535	388	498	450	657	543	713	577	945
TOTAL GROSS FIXED CAPITAL EXPENDITURE	9586	9944	11940	14260	2240	2783	2691	3084	2752	3413	3209	3657	3230	4164
INCREASE IN STOCKS-														
PRIVATE NON-FARM	28	-58	919	465	-58	48	-9	78	467	383	729	449	-368	-345
FARM AND MISCELLANEOUS	-144	-271	739	351	-79	-214	-58	727	491	-422	-234	791	306	-512
STATISTICAL DISCREPANCY	-220	263	934	-217	164	-307	634	291	88	-79	40	185	20	-462
NET LENDING TO OVERSEAS	-139	935	-468	-768	323	116	56	123	-189	-458	-543	-361	31	105
GROSS ACCUMULATION	9111	10813	14063	14091	2590	2426	3314	4302	3609	2838	3201	4721	3219	2950

(A) INCREASE IN INCOME TAX PROVISIONS, UNDISTRIBUTED COMPANY INCOME, RETAINED INCOME OF PUBLIC FINANCIAL ENTERPRISES, GENERAL GOVERNMENT GRANTS FOR PRIVATE CAPITAL PURPOSES AND EXTRAORDINARY INSURANCE CLAIMS PAID

TABLE 6 - INCREASE IN STOCKS

\$ MILLION

	YEAR				QUARTERS ENDED-									
	1971-72	1972-73	1973-74	1974-75	1972-73		1973-74		1974-75					
					MAR.	JUNE	SEPT.	DEC.	MAR.	JUNE	SEPT.	DEC.	MAR.	JUNE
INCREASE IN BOOK VALUE OF STOCKS														
MANUFACTURING-														
ENGINEERING AND METALS	77	29	345	)	7	60	19	50	126	150	219	175	123	)
VEHICLES	57	-40	165	)	1	2	29	15	50	71	63	80	-19	)
CHEMICALS AND OIL REFINING	14	3	151	)	-15	..	59	23	26	43	137	59	60	)
OTHER MANUFACTURING	118	123	409	)	79	84	25	21	137	226	220	130	20	)
				(A)										(A)
TOTAL MANUFACTURING	266	115	1070	)	72	146	132	109	339	490	639	444	184	)
COMMERCE	229	368	900	)	54	77	67	197	340	296	696	462	-50	)
OTHER NON-FARM INDUSTRIES	55	31	56	)	12	9	-6	21	14	27	22	45	39	)
PRIVATE NON-FARM	550	514	2026	2462	138	232	193	327	693	813	1357	951	173	-19
PUBLIC AUTHORITY STOCKS	8	-7	59	357										
FARM STOCKS	-80	-99	646	65	-95	-195	-72	757	456	-436	-218	838	307	-504
FARM AND MISCELLANEOUS	-72	-106	705	423	-95	-194	-72	757	456	-436	-218	838	307	-504
LESS STOCK VALUATION ADJUSTMENT-														
PRIVATE NON-FARM	522	572	1107	1997	196	184	202	249	226	430	628	502	541	326
FARM AND MISCELLANEOUS	72	165	-34	72	-16	20	-15	30	-36	-14	16	47	1	8
INCREASE IN STOCKS	-115	-328	1657	816	-137	-166	-67	805	958	-39	495	1240	-62	-857

(A) NOT YET AVAILABLE

TABLE 7 - GROSS FIXED CAPITAL EXPENDITURE AND INCREASE IN STOCKS AT AVERAGE 1966-67 PRICES

\$ MILLION

GROSS FIXED CAPITAL EXPENDITURE-														
PRIVATE-														
DWELLINGS	1414	1552	1593	1292	377	407	429	410	378	376	356	320	293	323
OTHER BUILDING AND CONSTRUCTION	1132	991	1010	941	203	260	244	290	224	252	238	262	202	239
ALL OTHER	2454	2328	2746	2666	523	642	631	755	629	731	683	678	573	732
TOTAL PRIVATE	4999	4871	5349	4899	1104	1309	1304	1455	1231	1359	1277	1260	1068	1294
PUBLIC	2605	2541	2534	2342	554	708	580	653	603	748	587	744	652	859
TOTAL	7604	7412	7933	7741	1658	2017	1885	2108	1834	2106	1864	2004	1720	2154
INCREASE IN STOCKS-														
PRIVATE NON-FARM	25	-47	660	312	-43	49	-4	53	338	274	379	238	-179	-126
FARM AND MISCELLANEOUS	-123	-130	396	245	5	-148	-93	436	302	-248	-85	454	161	-286
TOTAL	-98	-177	1057	555	-38	-99	-97	488	639	25	295	692	-18	-412

TABLE 8 - GROSS FIXED CAPITAL EXPENDITURE AND INCREASE IN STOCKS - SEASONALLY ADJUSTED

	QUARTERS ENDED-													
	1971-72			1972-73			1973-74			1974-75				
	MAR.	JUNE	SEPT.	DEC.	MAR.	JUNE	SEPT.	DEC.	MAR.	JUNE	SEPT.	DEC.	MAR.	JUNE
<b>GROSS FIXED CAPITAL EXPENDITURE-</b>														
<b>PRIVATE-</b>														
Dwellings	431	478	481	502	538	570	614	642	661	657	653	634	625	663
Other Building and Construction	360	336	338	335	332	356	365	396	411	422	444	459	483	483
All Other	723	787	737	729	752	800	859	945	957	1018	1055	1044	1099	1236
<b>TOTAL PRIVATE</b>	<b>1514</b>	<b>1601</b>	<b>1556</b>	<b>1566</b>	<b>1622</b>	<b>1726</b>	<b>1838</b>	<b>1983</b>	<b>2029</b>	<b>2107</b>	<b>2152</b>	<b>2137</b>	<b>2207</b>	<b>2382</b>
<b>PUBLIC ENTERPRISES</b>	<b>424</b>	<b>439</b>	<b>467</b>	<b>429</b>	<b>430</b>	<b>427</b>	<b>475</b>	<b>477</b>	<b>504</b>	<b>533</b>	<b>528</b>	<b>661</b>	<b>715</b>	<b>697</b>
<b>GENERAL GOVERNMENT</b>	<b>394</b>	<b>380</b>	<b>411</b>	<b>430</b>	<b>427</b>	<b>452</b>	<b>439</b>	<b>467</b>	<b>516</b>	<b>558</b>	<b>613</b>	<b>667</b>	<b>661</b>	<b>804</b>
<b>TOTAL</b>	<b>2332</b>	<b>2420</b>	<b>2434</b>	<b>2425</b>	<b>2479</b>	<b>2605</b>	<b>2752</b>	<b>2927</b>	<b>3049</b>	<b>3198</b>	<b>3293</b>	<b>3465</b>	<b>3583</b>	<b>3883</b>
<b>INCREASE IN STOCKS-</b>														
<b>PRIVATE NON-FARM</b>	<b>-14</b>	<b>-46</b>	<b>-15</b>	<b>-44</b>	<b>-32</b>	<b>29</b>	<b>-81</b>	<b>157</b>	<b>481</b>	<b>352</b>	<b>543</b>	<b>514</b>	<b>-294</b>	<b>-299</b>
<b>FARM AND MISCELLANEOUS</b>	<b>-78</b>	<b>-32</b>	<b>-153</b>	<b>-155</b>	<b>47</b>	<b>73</b>	<b>180</b>	<b>245</b>	<b>170</b>	<b>34</b>	<b>140</b>	<b>111</b>	<b>159</b>	<b>-63</b>
<b>TOTAL</b>	<b>-92</b>	<b>-78</b>	<b>-168</b>	<b>-200</b>	<b>15</b>	<b>102</b>	<b>99</b>	<b>402</b>	<b>651</b>	<b>396</b>	<b>683</b>	<b>625</b>	<b>-135</b>	<b>-362</b>

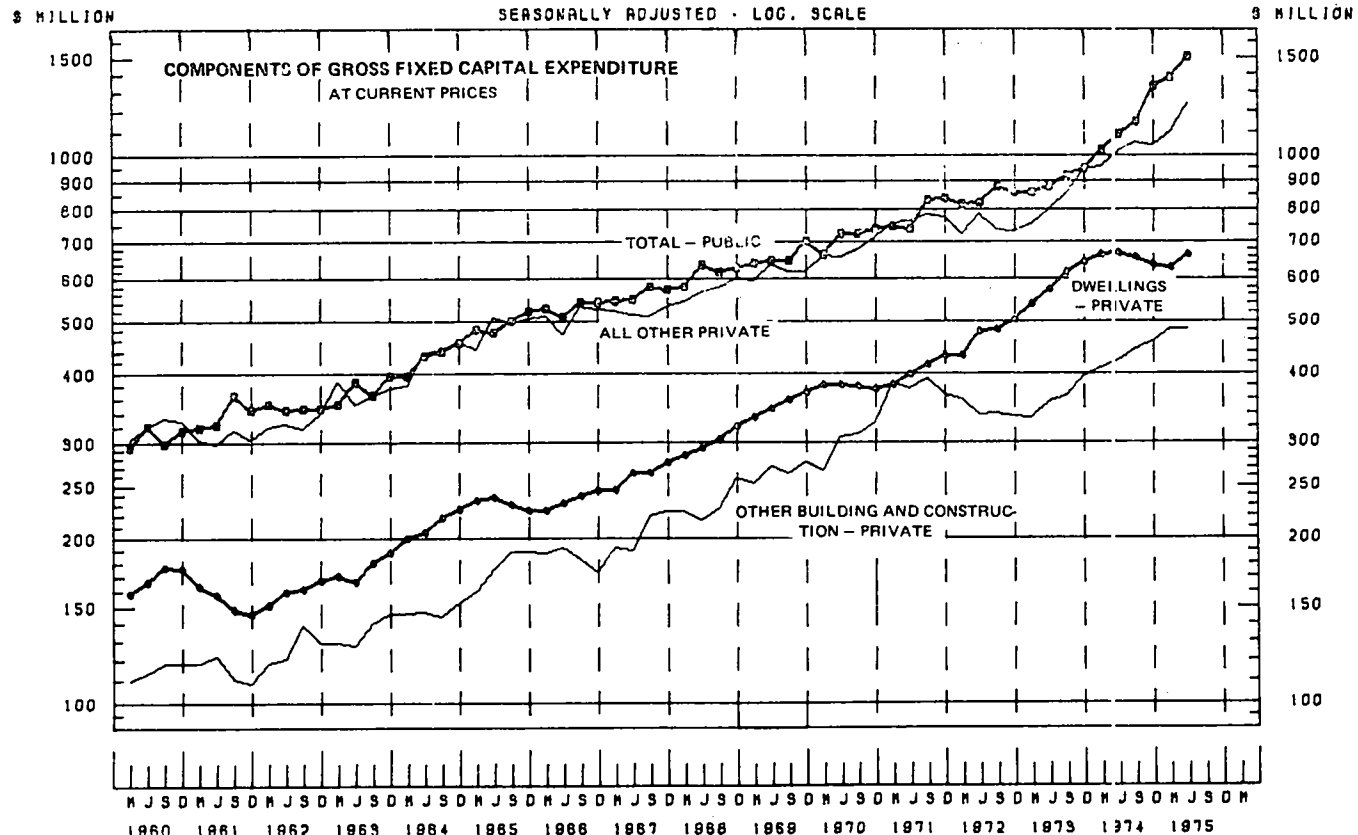


TABLE 3 - GROSS FIXED CAPITAL EXPENDITURE AND INCREASE IN STOCKS AT AVERAGE 1966-67 PRICES - SEASONALLY ADJUSTED \$ MILLION

	QUARTERS ENDED -													
	1971-72		1972-73				1973-74				1974-75			
	MAR.	JUNE	SEPT.	DEC.	MAR.	JUNE	SEPT.	DEC.	MAR.	JUNE	SEPT.	DEC.	MAR.	JUNE
<b>GROSS FIXED CAPITAL EXPENDITURE-</b>														
<b>PRIVATE-</b>														
<b>DWELLINGS</b>	343	375	371	382	396	404	412	411	397	372	342	321	308	320
<b>OTHER BUILDING AND CONSTRUCTION</b>	276	256	254	248	237	250	246	261	261	243	240	235	235	231
<b>ALL OTHER</b>	574	612	575	563	582	609	644	707	701	693	696	635	640	694
<b>TOTAL PRIVATE</b>	1193	1243	1200	1193	1215	1263	1302	1379	1359	1308	1278	1191	1183	1245
<b>PUBLIC</b>	643	628	670	634	614	624	630	626	665	653	638	712	718	762
<b>TOTAL</b>	1836	1871	1870	1827	1829	1887	1932	2005	2024	1971	1916	1903	1901	2007
<b>INCREASE IN STOCKS -</b>														
<b>PRIVATE NON-FARM</b>	-6	-32	-18	-33	-35	37	-64	117	339	267	304	315	-179	-129
<b>FARM AND MISCELLANEOUS</b>	-89	-58	-110	-117	27	71	97	128	132	37	119	37	95	-15
<b>TOTAL</b>	-95	-90	-129	-149	-9	108	33	244	472	304	422	352	-83	-143

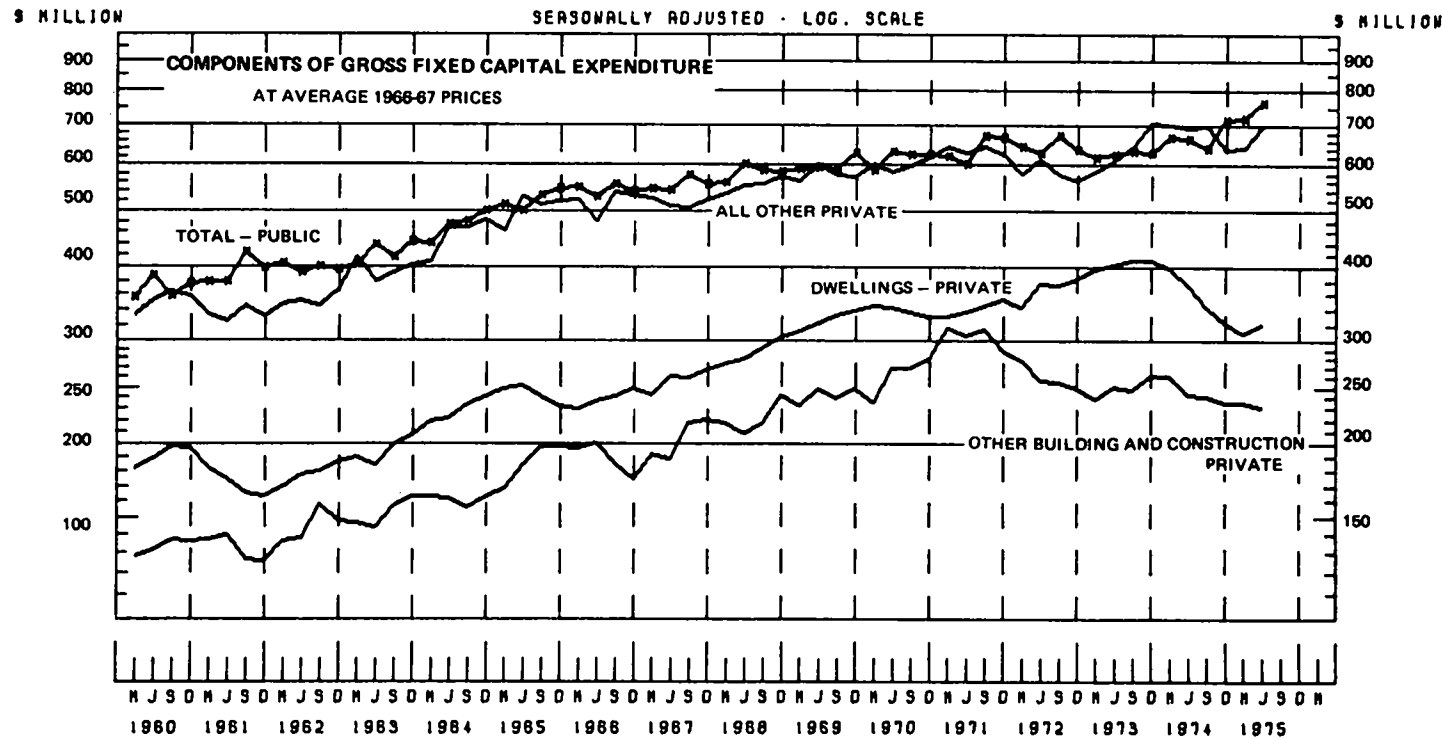


TABLE 10 - PRIVATE FINAL CONSUMPTION EXPENDITURE

\$ MILLION

	YEAR				QUARTERS ENDED-									
	1971-72	1972-73	1973-74	1974-75	1972-73		1973-74		1974-75					
					MAR.	JUNE	SEPT.	DEC.	MAR.	JUNE	SEPT.	DEC.	MAR.	JUNE
FOOD	4144	4569	5351	6121	1121	1181	1233	1368	1336	1414	1468	1555	1485	1613
CIGARETTES AND TOBACCO	605	706	785	920	169	180	184	207	193	201	217	233	224	246
ALCOHOLIC DRINKS	1416	1561	1781	2046	402	390	402	489	452	439	462	542	527	515
CLOTHING, FOOTWEAR AND DRAPERY	1987	2224	2666	2974	472	624	596	748	578	744	699	828	634	813
DWELLING RENT	3053	3469	4038	4375	880	909	942	996	1027	1073	1143	1211	1277	1344
GAS, ELECTRICITY, FUEL	527	555	622	763	115	143	187	141	129	165	222	181	159	208
ELECTRICAL GOODS	665	758	960	1193	179	193	210	276	222	254	258	336	282	317
OTHER HOUSEHOLD DURABLES	973	1119	1437	1532	250	282	319	417	329	371	393	487	356	396
FARES	760	828	963	1154	213	213	231	229	250	253	277	283	302	293
PURCHASE OF MOTOR VEHICLES	1120	1210	1435	1715	299	334	363	376	316	380	427	430	403	455
POSTAL AND TELEPHONE SERVICES	247	281	335	413	72	72	77	81	89	88	92	97	103	122
OTHER GOODS AND SERVICES	6733	7606	8764	10846	1860	1999	2040	2232	2156	2336	2468	2744	2706	2929
TOTAL	22230	24887	29136	34758	6032	6521	6782	7559	7077	7717	8125	8926	8456	9250

TABLE 11 - PRIVATE FINAL CONSUMPTION EXPENDITURE - SEASONALLY ADJUSTED

\$ MILLION

	QUARTERS ENDED-													
	1971-72		1972-73		1973-74		1974-75							
	MAR.	JUNE	SEPT.	DEC.	MAR.	JUNE	SEPT.	DEC.	MAR.	JUNE	SEPT.	DEC.	MAR.	JUNE
FOOD	1039	1061	1036	1127	1149	1202	1247	1302	1372	1439	1482	1484	1521	1642
CIGARETTES, TOBACCO AND ALCOHOLIC DRINKS	509	522	540	552	572	605	608	633	649	680	704	706	756	808
CLOTHING, FOOTWEAR AND DRAPERY	495	512	527	539	568	592	628	640	701	705	731	714	763	771
DWELLING RENT	777	798	828	852	880	909	942	996	1027	1073	1143	1211	1277	1344
HOUSEHOLD DURABLES	409	421	442	455	479	507	546	579	615	656	672	689	711	759
PURCHASE OF MOTOR VEHICLES	268	274	270	293	316	334	354	365	335	380	416	417	427	455
OTHER GOODS AND SERVICES	2094	2177	2233	2260	2342	2439	2510	2598	2720	2855	3037	3204	3388	3566
TOTAL	5591	5765	5936	6078	6306	6588	6841	7113	7419	7798	8185	8425	8843	9345

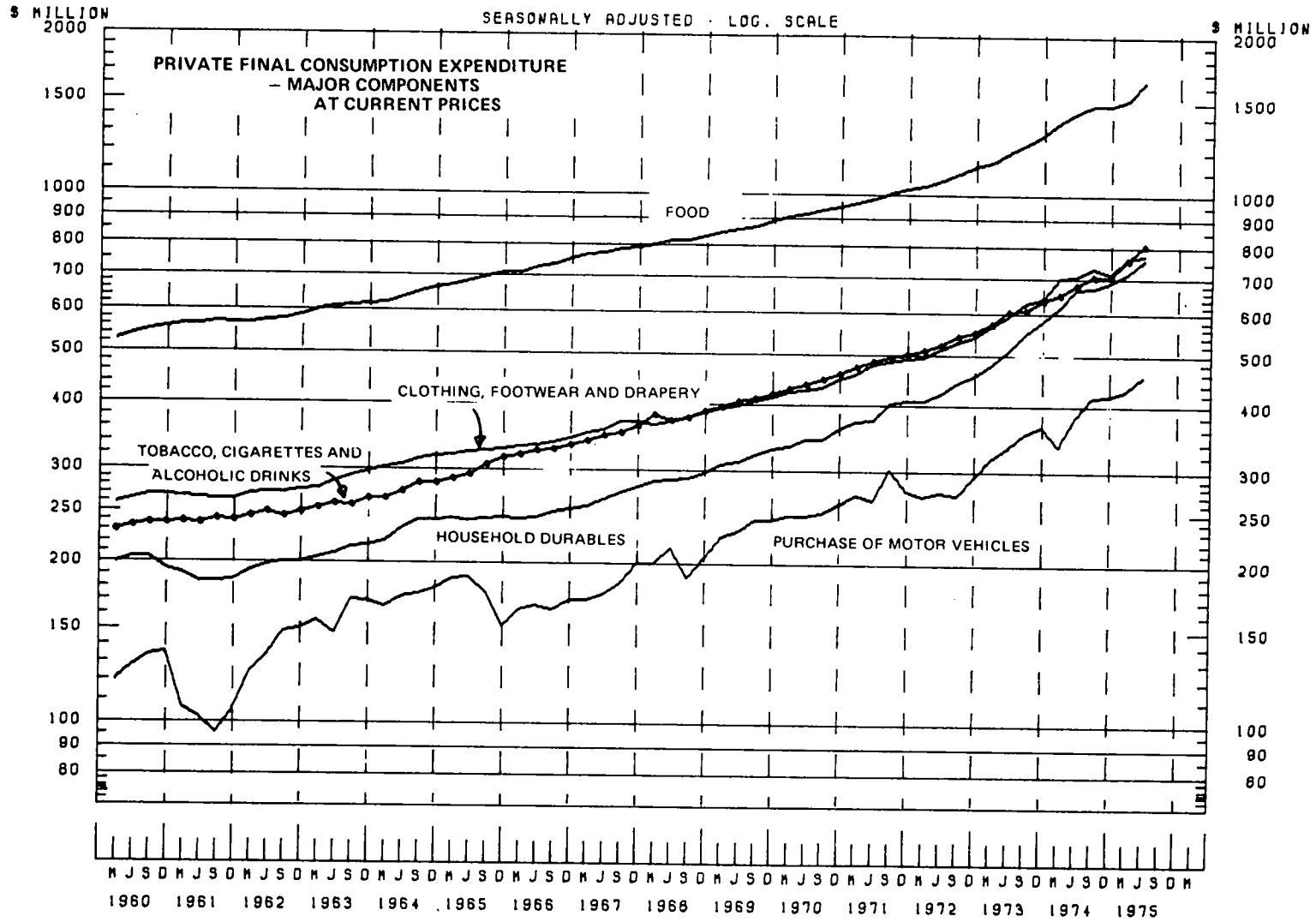


TABLE 12 - NATIONAL INCOME AND OUTLAY ACCOUNT

\$ MILLION

	YEAR				QUARTERS ENDED-									
	1971-72	1972-73	1973-74	1974-75	1972-73		1973-74		1974-75					
					MAR.	JUNE	SEPT.	DEC.	MAR.	JUNE	SEPT.	DEC.	MAR.	JUNE
WAGES, SALARIES AND SUPPLEMENTS	20037	22384	27502	35177	5389	6122	6253	6974	6682	7593	8215	9204	8547	9211
NET OPERATING SURPLUS	9830	11845	14069	12646	2750	2655	3478	4529	3487	2575	2790	4298	2833	2724
DOMESTIC FACTOR INCOMES	29867	34229	41571	47823	8139	8677	9731	11503	10159	10168	11005	13502	11380	11935
LESS NET INCOME PAID OVERSEAS	387	422	323	339	150	30	76	91	87	69	50	116	101	72
INDIRECT TAXES	4077	4550	5626	6993	1179	1274	1172	1389	1461	1505	1551	1719	1732	1997
LESS SUBSIDIES	388	323	273	326	80	112	59	59	60	100	77	82	67	100
NATIONAL INCOME	33169	38034	46595	54157	9088	9759	110768	12742	11483	11504	12429	15023	12944	13760
LESS NET TRANSFERS TO OVERSEAS	151	231	306	226	44	72	67	53	72	113	73	100	14	38
NATIONAL DISPOSABLE INCOME	33018	37804	46290	53931	9044	9687	110701	12689	11411	11491	12356	14923	12930	13722
FINAL CONSUMPTION EXPENDITURE -														
PRIVATE	22230	24887	29136	34758	6032	6521	6782	7559	7077	7717	8125	8926	8456	9250
GOVERNMENT	4754	5429	6733	9000	1258	1587	1495	1734	1643	1960	1980	2262	2222	2536
SAVING	6034	7488	10421	10173	1754	1579	2424	3396	2691	1314	2251	3735	2252	1936
DISPOSAL OF INCOME	33018	37804	46290	53931	9044	9687	110701	12689	11411	11491	12356	14923	12930	13722

TABLE 13 - OVERSEAS TRANSACTIONS ACCOUNT

\$ MILLION

IMPORTS F.O.B. (A)	3792	3808	5753	7701	960	1016	1235	1302	1473	1743	2103	2087	1766	1746
TRANSPORTATION AND TRAVEL	1112	1205	1515	1895	303	344	332	351	371	462	468	476	452	499
OTHER GOODS AND SERVICES	334	347	392	450	86	98	92	91	95	104	115	105	107	123
IMPORTS OF GOODS AND SERVICES	5238	5360	7649	10047	1348	1457	1658	1744	1938	2309	2686	2667	2325	2368
PROPERTY INCOME TO OVERSEAS	593	719	731	707	235	151	163	195	201	173	150	214	178	165
PERSONAL AND GENERAL GOVERNMENT														
TRANSFERS TO OVERSEAS	378	468	511	598	102	127	119	105	122	165	122	162	153	161
NET LENDING TO OVERSEAS	-139	935	-468	-768	323	116	56	123	-189	-458	-543	-361	31	105
USE OF CURRENT RECEIPTS	6070	7482	8423	10584	2008	1861	1996	2167	2072	2188	2415	2683	2688	2798
EXPORTS F.O.B. (A)	4744	6010	6694	8479	1629	1505	1601	1730	1626	1737	1926	2167	2139	2246
TRANSPORTATION AND TRAVEL	630	697	882	1105	179	172	199	228	226	229	261	292	277	275
OTHER GOODS AND SERVICES	263	240	231	271	58	59	56	53	57	65	79	67	62	63
EXPORTS OF GOODS AND SERVICES	5637	6947	7808	9855	1865	1735	1857	2011	1909	2032	2266	2526	2478	2585
PROPERTY INCOME FROM OVERSEAS	206	296	408	367	85	71	97	104	113	104	99	99	77	93
TRANSFERS FROM OVERSEAS														
PERSONAL	226	238	207	217	58	55	53	52	50	53	50	58	53	56
EXTRAORDINARY INSURANCE CLAIMS	..	..	..	145	..	..	..	..	..	..	..	..	80	65
CURRENT RECEIPTS FROM OVERSEAS	6070	7482	8423	10584	2008	1861	1996	2167	2072	2188	2415	2683	2688	2798

(A) RECORDED FIGURES, ADJUSTED FOR THE PURPOSE OF BALANCE OF PAYMENTS ESTIMATES



TABLE 14 - HOUSEHOLDS INCOME AND OUTLAY ACCOUNT (A)

\$ MILLION

	YEAR				QUARTERS ENDED-									
	1971-72	1972-73	1973-74	1974-75	1972-73		1973-74		1974-75					
					MAR.	JUNE	SEPT.	DEC.	MAR.	JUNE	SEPT.	DEC.	MAR.	JUNE
WAGES, SALARIES AND SUPPLEMENTS	20037	22384	27532	35177	5389	6022	6253	6974	6682	7593	8215	9204	8547	9211
INCOME OF FARM UNINCORPORATED ENTERPRISES	1145	1696	2703	1539	496	180	516	1229	920	38	198	1032	498	-189
INCOME OF OTHER UNINCORPORATED ENTERPRISES AND FROM DWELLINGS AND INTEREST AND DIVIDENDS	5720	6551	7587	8798	1427	1927	1632	2016	1668	2271	1905	2308	1969	2617
THIRD PARTY INSURANCE TRANSFERS	80	89	117	148	23	24	26	28	30	33	35	36	38	39
TRANSFERS FROM OVERSEAS	226	238	207	217	58	55	53	52	50	53	50	58	53	56
TRANSFERS FROM GENERAL GOVERNMENT-														
CASH BENEFITS	2169	2695	3258	4530	689	761	725	824	786	922	964	1117	1112	1337
UNFUNDED EMPLOYEE RETIREMENT BENEFITS	..	..	65	88	..	..	13	13	18	21	22	25	20	21
RECEIPTS	29378	33653	41439	50497	8083	8970	9217	11137	10155	10931	11388	13780	12237	13092
PRIVATE FINAL CONSUMPTION	22230	24887	29136	34758	6032	6521	6782	7559	7077	7717	8125	8926	8456	9250
CONSUMER DEBT INTEREST	233	277	408	504	71	76	92	102	105	109	124	125	126	129
INCOME TAX PAYABLE	3815	4084	5852	7334	975	1090	1297	1575	1435	1545	1662	2023	1776	1874
OTHER DIRECT TAXES, FEES, FINES, ETC.	440	488	559	580	120	126	135	139	136	149	150	138	137	155
TRANSFERS OVERSEAS	172	217	223	248	53	64	54	49	51	69	61	61	61	66
SAVING	2488	3700	5251	7073	832	1093	857	1713	1351	1342	1266	2507	1681	1618
DISBURSEMENTS	29378	33653	41439	50497	8083	8970	9217	11137	10155	10931	11388	13780	12237	13092

(A) INCLUDES UNINCORPORATED ENTERPRISES

TABLE 15 - HOUSEHOLD DISPOSABLE INCOME

\$ MILLION

HOUSEHOLD INCOME	29378	33653	41439	50497	8083	8970	9217	11137	10155	10931	11388	13780	12237	13092
LESS INCOME TAX AND OTHER DIRECT TAXES, FEES, FINES, ETC.	4255	4572	6412	7914	1095	1215	1432	1714	1571	1694	1812	2161	1913	2029
CONSUMER DEBT INTEREST	233	277	408	504	71	76	92	102	105	109	124	125	126	129
TRANSFERS OVERSEAS	172	217	223	248	53	64	54	49	51	69	61	61	61	66
HOUSEHOLD DISPOSABLE INCOME	24718	28588	34397	41832	6864	7615	7639	9272	8428	9058	9392	11433	10138	10869

TABLE 16 - INCOME OF FARM UNINCORPORATED ENTERPRISES

\$ MILLION

	YEAR				QUARTERS ENDED-									
	1971-72	1972-73	1973-74	1974-75	1972-73		1973-74		1974-75					
					MAR.	JUNE	SEPT.	DEC.	MAR.	JUNE	SEPT.	DEC.	MAR.	JUNE
GROSS VALUE OF PRODUCTION (ALL FARMS)-														
WOOL (INCLUDING SKIN WOOL)	660	1243	1229	949	261	172	421	490	195	123	246	408	171	124
OTHER PASTORAL PRODUCTS	904	1292	1337	589	351	358	430	381	282	244	210	187	143	149
SUGAR CANE	287	230	213	479	..	..	113	106	..	..	292	187	..	..
WHEAT	457	348	1264	1187	116	..	..	574	630	..	..	638	549	..
OTHER GRAIN CROPS	237	218	403	445	51	72	..	159	130	114	..	260	91	94
OTHER CROPS	682	765	916	990	306	203	78	235	372	231	90	229	409	262
DAIRYING,POULTRY,ETC.	814	843	984	1038	208	175	244	298	239	203	256	312	256	214
TOTAL	3961	4939	6352	5777	1293	990	1286	2243	1908	315	1094	2221	1619	843
LESS STOCK VALUATION ADJUSTMENT	50	129	-36	54	-27	16	-15	27	-36	-12	18	41	-8	3
PRODUCTION COSTS OTHER THAN WAGES AND DEPRECIATION (A)	1740	1963	2259	2528	527	514	449	604	660	546	511	716	735	666
GROSS FARM PRODUCT AT FACTOR COST	2171	2847	4129	3095	793	460	852	1612	1284	381	565	1464	892	174
LESS WAGES,DEPRECIATION,NET RENT AND INTEREST PAID (B)	1002	1073	1300	1512	..	..	..	..	..	..	..	..	..	..
FARM INCOME OF COMPANIES	24	79	126	45	297	280	335	383	364	343	367	432	394	364
INCOME OF FARM UNINCORPORATED ENTERPRISES	1145	1696	2703	1539	496	180	516	1229	920	38	198	1032	498	-189
LESS INCREASE IN ASSETS WITH MARKETING ORGANISATIONS	-23	-142	571	200	-199	-94	134	406	128	-97	51	469	-49	-281
REALISED INCOME OF FARM UNINCORPORATED ENTERPRISES	1168	1838	2132	1339	695	274	382	823	792	135	137	563	547	92

(A) INCLUDES MARKETING COSTS, COSTS OF SEED AND FODDER, INDIRECT TAXES BUT EXCLUDES RENT AND INTEREST.  
(B) AND THIRD PARTY INSURANCE TRANSFERS

TABLE 17 - GENERAL GOVERNMENT INCOME AND OUTLAY ACCOUNT

\$ MILLION

	YEAR				QUARTERS ENDED-									
	1971-72	1972-73	1973-74	1974-75	1972-73		1973-74		1974-75					
					MAR.	JUNE	SEPT.	DEC.	MAR.	JUNE	SEPT.	DEC.	MAR.	JUNE
INDIRECT TAXES	4077	4550	5626	6999	1179	1274	1172	1389	1461	1505	1551	1719	1732	1997
DIRECT TAXES (PAID) ON INCOME	5284	5702	7498	10140	1509	2725	735	1073	2132	3558	1398	2047	1896	4798
OTHER DIRECT TAXES, FEES, FINES, ETC.	440	488	559	580	120	126	135	139	136	149	150	138	137	155
INTEREST, ETC. RECEIVED	299	339	412	524	87	95	80	109	101	123	67	148	117	193
INCOME FROM PUBLIC ENTERPRISES	793	777	699	556	132	146	231	209	134	125	168	230	80	79
RECEIPTS	10893	11856	14794	18798	3026	4366	2353	2919	3963	5560	3333	4282	3961	7221
FINAL CONSUMPTION EXPENDITURE	4754	5429	6733	9000	1258	1597	1495	1734	1643	1860	1980	2262	2222	2536
SUBSIDIES	388	323	279	326	80	102	59	59	60	100	77	82	67	100
INTEREST, ETC. PAID	910	1010	1070	1288	237	279	232	270	268	301	261	363	304	360
TRANSFERS OVERSEAS	206	252	288	350	49	64	65	56	71	95	62	101	92	95
TRANSFERS TO PERSONS - CASH BENEFITS	2169	2695	3258	4530	589	761	725	824	786	922	954	1117	1112	1337
UNFUNDED EMPLOYEE RETIREMENT BENEFITS	..	..	65	88	..	..	13	13	18	21	22	25	20	21
GRANTS FOR PRIVATE CAPITAL PURPOSES	55	75	87	138	19	23	23	19	21	23	26	28	36	47
SURPLUS ON CURRENT TRANSACTIONS	2410	2072	3014	3078	693	1549	-260	-57	1094	2237	-58	305	107	2725
DISBURSEMENTS	10893	11856	14794	18798	3026	4366	2353	2919	3963	5560	3333	4282	3961	7221

TABLE 13 - GENERAL GOVERNMENT INCOME AND OUTLAY ACCOUNT - AUSTRALIAN GOVERNMENT'S AUTHORITIES

\$ MILLION

	YEAR				QUARTERS ENDED-									
	1971-72	1972-73	1973-74	1974-75	1972-73		1973-74		1974-75		SEPT.	DEC.	MAR.	JUNE
					MAR.	JUNE	SEPT.	DEC.	MAR.	JUNE				
INDIRECT TAXES	2518	2629	3248	3941	691	671	694	836	856	862	935	1027	979	999
DIRECT TAXES (PAID) ON INCOME	5284	5702	7498	10140	1509	2725	735	1073	2132	3558	1398	2047	1896	4798
OTHER DIRECT TAXES, FEES, FINES, ETC.	137	140	171	133	33	38	44	37	42	48	43	30	28	31
INTEREST, ETC. RECEIVED	62	77	87	98	17	18	20	26	20	21	12	47	16	23
INCOME FROM PUBLIC ENTERPRISES	306	308	283	240	62	78	75	66	78	65	49	109	45	37
<b>RECEIPTS</b>	<b>8307</b>	<b>8855</b>	<b>11287</b>	<b>14551</b>	<b>2311</b>	<b>3529</b>	<b>1567</b>	<b>2037</b>	<b>3128</b>	<b>4555</b>	<b>2438</b>	<b>3260</b>	<b>2964</b>	<b>5889</b>
FINAL CONSUMPTION EXPENDITURE														
PAYMENTS BASIS	2175	2373	2739	3575	546	686	636	661	682	761	787	906	877	1005
OVERSEAS ADJUSTMENT - DEFENCE	-28	-22	100	-19	-8	-8	61	37	11	-9	2	3	-6	-19
SUBSIDIES PAID	377	323	300	284	109	95	50	68	75	106	56	79	63	86
ADJUSTMENT OF SUBSIDIES TO PAYABLE BASIS	-18	-28	-52	9	-36	..	..	-18	-22	-12	11	-6	-3	6
INTEREST, ETC. PAID	-14	15	6	106	23	-51	13	19	33	-59	32	71	40	-36
TRANSFERS OVERSEAS	205	252	288	350	49	54	65	56	71	95	62	101	92	95
TRANSFERS TO PERSONS -														
CASH BENEFITS	2041	2533	3077	4323	646	716	689	781	736	871	923	1068	1056	1275
UNFUNDED EMPLOYEE RETIREMENT BENEFITS	..	..	65	88	..	..	13	13	18	21	22	25	20	21
GRANTS FOR PRIVATE CAPITAL PURPOSES	41	54	63	102	13	17	16	15	16	17	17	23	27	34
GRANTS TO STATES & LOCAL GOVT.	1769	2076	2538	3785	546	522	533	652	685	618	901	935	973	975
SURPLUS ON CURRENT TRANSACTIONS	1759	1279	2163	1950	423	1489	-559	-246	821	2147	-374	54	-176	2446
<b>DISBURSEMENTS</b>	<b>8307</b>	<b>8855</b>	<b>11287</b>	<b>14551</b>	<b>2311</b>	<b>3529</b>	<b>1567</b>	<b>2037</b>	<b>3128</b>	<b>4555</b>	<b>2438</b>	<b>3260</b>	<b>2964</b>	<b>5889</b>

TABLE 19 - GENERAL GOVERNMENT INCOME AND OUTLAY ACCOUNT - STATE AND LOCAL AUTHORITIES

\$ MILLION

	YEAR				QUARTERS ENDED-									
	1971-72	1972-73	1973-74	1974-75	1972-73		1973-74		1974-75					
					MAR.	JUNE	SEPT.	DEC.	MAR.	JUNE	SEPT.	DEC.	MAR.	JUNE
INDIRECT TAXES	1559	1921	2378	3058	488	603	477	553	605	742	615	692	753	998
DIRECT TAXES, FEES, FINES ETC.	303	348	369	447	87	88	92	102	93	102	106	108	108	123
INTEREST, ETC. RECEIVED	236	263	325	426	70	77	60	83	81	101	54	101	101	169
INCOME FROM PUBLIC ENTERPRISES	487	469	416	316	69	68	156	144	56	60	119	121	35	42
GRANTS FROM AUSTRALIAN GOVERNMENT	1769	2076	2538	3785	546	522	583	652	685	618	901	935	973	975
RECEIPTS	4354	5077	6045	8031	1261	1358	1368	1533	1520	1523	1795	1958	1970	2308
FINAL CONSUMPTION EXPENDITURE	2607	3078	3894	5444	721	909	799	1036	951	1108	1191	1352	1351	1550
SUBSIDIES PAID	30	28	32	34	7	7	3	9	7	7	10	9	7	8
INTEREST, ETC. PAID	924	995	1064	1182	214	330	219	251	234	360	230	292	264	396
TRANSFERS OVERSEAS	..	..	..	..	..	..	..	..	..	..	..	..	..	..
TRANSFERS TO PERSONS - CASH BENEFITS	127	162	181	208	43	46	36	44	50	51	41	49	56	62
GRANTS FOR PRIVATE CAPITAL PURPOSES	15	21	23	36	6	5	7	4	6	7	9	5	9	13
SURPLUS ON CURRENT TRANSACTIONS	651	793	851	1127	270	61	299	189	273	90	315	251	283	279
DISBURSEMENTS	4354	5077	6045	8031	1261	1358	1368	1533	1520	1523	1795	1958	1970	2308

TABLE 20 - TAXES, FEES, FINES, ETC.

\$ MILLION

	YEAR				QUARTERS ENDED-									
	1971-72	1972-73	1973-74	1974-75	1972-73		1973-74		1974-75					
					MAR.	JUNE	SEPT.	DEC.	MAR.	JUNE	SEPT.	DEC.	MAR.	JUNE
INCOME TAXES -														
COMPANIES	1520	1617	2013	2431	536	995	44	37	772	1160	68	407	140	1817
PERSONS-														
NET TAX INSTALMENTS	2889	3160	4238	6071	870	1006	607	1002	1224	1405	1176	1591	1629	1676
OTHER	876	924	1247	1637	103	723	84	34	136	993	155	50	128	1305
TOTAL	5284	5702	7498	10140	1509	2725	735	1073	2132	3558	1398	2047	1896	4798
ESTATE AND GIFT DUTIES	220	237	261	279	58	51	62	69	53	67	67	70	67	74
CUSTOMS DUTY	469	513	604	841	127	129	134	144	152	175	225	230	191	195
EXCISE DUTY	1213	1268	1555	1729	324	318	346	419	336	394	412	458	426	433
SALES TAX	681	765	959	1154	218	203	192	244	276	256	259	285	300	310
PAYROLL TAX (A)	392	451	667	1030	113	118	129	162	197	190	232	255	268	275
RADIO AND TELEVISION LICENCES	62	67	68	19	16	18	20	14	16	18	19	..	..	..
LAND TAX	103	113	122	174	28	29	25	35	22	40	43	44	34	53
LOCAL GOVERNMENT RATES	441	480	546	704	138	131	79	88	159	220	93	129	187	295
LIQUOR TAXES	49	53	58	77	10	16	13	16	12	18	16	16	13	33
RACING, LOTTERY AND POKER														
MACHINES TAXES	150	172	209	281	34	54	40	61	44	64	53	77	54	97
TAXES ON OWNERSHIP AND OPERATION														
OF MOTOR VEHICLES	304	349	380	454	82	91	95	97	89	100	105	109	109	130
STAMP DUTIES N.E.I.	252	355	436	398	89	113	112	108	98	118	89	82	92	135
UNFUNDED EMPLOYEE RETIREMENT														
CONTRIBUTIONS	..	1	27	35	..	1	6	7	7	8	7	9	9	10
OTHER TAXES, FEES, FINES ETC.	182	215	282	406	61	61	55	64	76	86	80	92	121	114
TOTAL	9801	10740	13683	17719	2809	4127	2042	2600	3789	5313	3099	3905	3765	6951

(A) EXCLUDES PAYROLL TAX RECEIVED BY STATES FROM STATE AUTHORITIES OTHER THAN PUBLIC ENTERPRISES

TABLE 21 - GENERAL GOVERNMENT CASH BENEFITS TO PERSONS

\$ MILLION

HOSPITAL, MEDICAL AND PHARMACEUTICAL BENEFITS	496	566	644	810	140	153	157	162	155	171	187	197	200	226
AGE AND INVALID PENSIONS	819	1072	1372	1919	277	3317	281	3354	318	3419	409	4491	433	4586
CHILD ENDOWMENT	217	254	225	225	56	54	58	60	53	54	58	59	54	54
WAR AND SERVICE PENSIONS	260	297	356	470	84	76	86	89	88	92	111	132	109	118
OTHER	378	504	660	1107	132	161	143	160	172	186	200	238	316	353
TOTAL	2169	2695	3258	4530	689	761	725	824	786	922	964	1117	1112	1337

(A) IN THIS QUARTER THERE WERE SEVEN PAY PERIODS INSTEAD OF SIX

TABLE 22 - GENERAL GOVERNMENT INCOME FROM PUBLIC ENTERPRISES

\$ MILLION

		YEAR				QUARTERS ENDED-									
						1972-73		1973-74		1974-75					
		1971-72	1972-73	1973-74	1974-75	MAR.	JUNE	SEPT.	DEC.	MAR.	JUNE	SEPT.	DEC.	MAR.	JUNE
RAILWAYS AND URBAN TRANSIT	REVENUE	740	740	798	952	175	196	194	198	188	217	223	249	228	252
	EXPENDITURE	773	864	1038	1341	213	236	240	256	251	292	314	341	331	356
	INCOME	-33	-124	-241	-389	-39	-40	-46	-57	-62	-75	-91	-91	-103	-104
OTHER TRANSPORT AND COMMUNI- CATION	REVENUE	1441	1606	1923	2385	396	416	447	471	484	521	541	640	594	610
	EXPENDITURE	1188	1332	1650	2104	338	337	387	406	407	451	489	518	538	558
	INCOME	254	274	273	281	58	79	60	65	78	70	51	122	56	52
ELECTRICITY AND GAS (A)	REVENUE	1013	1125	1265	1509	261	298	330	295	290	350	391	356	350	412
	EXPENDITURE	765	833	946	1172	199	221	222	232	224	269	286	289	285	313
	INCOME	248	292	319	337	62	76	108	63	67	81	105	67	66	99
WATER SUPPLY AND SEWERAGE	REVENUE	371	416	467	524	77	68	117	169	89	92	137	182	121	84
	EXPENDITURE	190	216	250	296	54	60	56	60	64	69	69	74	77	76
	INCOME	180	200	217	228	23	8	61	108	25	23	68	108	43	8
RENTAL HOUSING	REVENUE	102	110	124	143	28	28	29	32	30	32	34	34	35	40
	EXPENDITURE	73	76	86	108	16	24	16	23	21	26	22	28	26	32
	INCOME	29	34	38	35	12	5	13	9	9	7	12	6	10	7
INCOME OF ALL PUBLIC TRADING ENTERPRISES (B)		729	737	673	544	124	144	215	207	127	124	165	224	78	76
INCOME OF PUBLIC FINANCIAL ENTERPRISES PAID TO GENERAL GOVERNMENT		64	40	26	12	7	2	16	2	7	1	3	6	1	2
INCOME FROM PUBLIC ENTERPRISES		793	777	699	556	132	146	231	209	134	125	168	230	80	79

(A) INCLUDES HYDRO-ELECTRIC AUTHORITIES

(B) INCLUDES MISCELLANEOUS PUBLIC TRADING ENTERPRISES NOT SHOWN ABOVE

TABLE 23 - GOVERNMENT FINAL CONSUMPTION EXPENDITURE

\$ MILLION

	YEAR				QUARTERS ENDED-									
	1971-72	1972-73	1973-74	1974-75	1972-73		1973-74		1974-75					
					MAR.	JUNE	SEPT.	DEC.	MAR.	JUNE	SEPT.	DEC.	MAR.	JUNE
<b>AUSTRALIAN GOVERNMENT'S AUTHORITIES</b>														
DEFENCE	1127	1178	1222	1444	260	358	295	302	289	336	316	374	361	393
OVERSEAS ADJUSTMENT - DEFENCE	-28	-22	100	-13	-8	-8	61	37	11	-9	2	3	-6	-19
EDUCATION	64	81	112	169	21	23	24	28	28	32	39	42	39	48
HEALTH, SOCIAL SECURITY AND WELFARE	199	235	311	475	56	68	72	72	77	90	100	119	114	142
ECONOMIC SERVICES	261	279	316	405	66	75	75	78	82	81	91	118	87	109
ALL OTHER (A)	524	600	778	1083	143	161	170	180	206	222	240	253	276	314
<b>TOTAL</b>	<b>2147</b>	<b>2351</b>	<b>2839</b>	<b>3556</b>	<b>538</b>	<b>679</b>	<b>696</b>	<b>698</b>	<b>693</b>	<b>752</b>	<b>789</b>	<b>910</b>	<b>871</b>	<b>987</b>
<b>STATE AND LOCAL AUTHORITIES</b>														
LAW, ORDER AND PUBLIC SAFETY	282	328	397	540	80	93	84	97	100	116	109	142	136	153
EDUCATION	1149	1362	1774	2530	311	399	360	485	463	465	564	598	681	688
HEALTH, SOCIAL SECURITY AND WELFARE	574	668	891	1278	161	212	173	244	189	284	274	330	285	388
ECONOMIC SERVICES	220	261	314	411	58	71	82	78	67	88	107	108	93	103
ALL OTHER	382	460	519	685	111	134	100	132	131	156	137	174	156	218
<b>TOTAL</b>	<b>2607</b>	<b>3078</b>	<b>3894</b>	<b>5444</b>	<b>721</b>	<b>909</b>	<b>799</b>	<b>1036</b>	<b>951</b>	<b>1108</b>	<b>1191</b>	<b>1352</b>	<b>1351</b>	<b>1550</b>
<b>ALL PUBLIC AUTHORITIES</b>														
DEFENCE (INCLUDING ADJUSTMENT)	1100	1157	1322	1424	252	351	356	339	300	327	318	377	355	375
LAW, ORDER AND PUBLIC SAFETY	312	365	446	615	88	104	93	110	112	131	125	160	155	176
EDUCATION	1213	1443	1885	2699	332	423	384	513	491	497	603	640	720	736
HEALTH, SOCIAL SECURITY AND WELFARE	773	902	1202	1753	217	280	246	315	266	374	374	449	399	530
ECONOMIC SERVICES	481	540	631	816	124	146	156	157	149	169	198	227	180	212
ALL OTHER	875	1023	1247	1693	246	284	260	299	325	363	352	409	414	508
<b>TOTAL</b>	<b>4754</b>	<b>5429</b>	<b>6733</b>	<b>9000</b>	<b>1258</b>	<b>1587</b>	<b>1495</b>	<b>1734</b>	<b>1643</b>	<b>1860</b>	<b>1980</b>	<b>2262</b>	<b>2222</b>	<b>2536</b>

(A) INCLUDES EXPENDITURE ON LAW, ORDER AND PUBLIC SAFETY, RADIO AND TELEVISION BROADCASTING SERVICES ETC.



TABLE 24 - GROSS FIXED CAPITAL EXPENDITURE - PUBLIC AUTHORITIES

\$ MILLION

	YEAR				QUARTERS ENDED-									
	1971-72	1972-73	1973-74	1974-75	1972-73		1973-74		1974-75					
					MAR.	JUNE	SEPT.	DEC.	MAR.	JUNE	SEPT.	DEC.	MAR.	JUNE
<b>GENERAL GOVERNMENT-</b>														
AUSTRALIAN GOVERNMENT	192	222	256	372	51	55	53	68	58	76	70	109	71	121
STATE AND LOCAL GOVERNMENT	1362	1506	1737	2406	322	479	335	430	391	580	472	604	506	824
<b>TOTAL</b>	<b>1554</b>	<b>1727</b>	<b>1993</b>	<b>2778</b>	<b>372</b>	<b>535</b>	<b>388</b>	<b>498</b>	<b>450</b>	<b>657</b>	<b>543</b>	<b>713</b>	<b>577</b>	<b>945</b>
<b>PUBLIC ENTERPRISES-</b>														
AUSTRALIAN GOVERNMENT	670	615	770	1005	142	153	185	185	202	198	201	249	304	251
STATE AND LOCAL GOVERNMENT	1077	1136	1222	1606	258	314	270	304	267	382	303	426	364	507
<b>TOTAL</b>	<b>1747</b>	<b>1751</b>	<b>1992</b>	<b>2505</b>	<b>400</b>	<b>467</b>	<b>454</b>	<b>488</b>	<b>470</b>	<b>580</b>	<b>504</b>	<b>676</b>	<b>668</b>	<b>757</b>
<b>PUBLIC AUTHORITIES-</b>														
AUSTRALIAN GOVERNMENT	862	836	1026	1377	192	208	238	253	251	275	271	359	376	372
STATE AND LOCAL GOVERNMENT	2439	2642	2959	4006	580	793	604	734	658	963	775	1030	870	1331
<b>TOTAL</b>	<b>3301</b>	<b>3478</b>	<b>3985</b>	<b>5383</b>	<b>772</b>	<b>1002</b>	<b>842</b>	<b>987</b>	<b>919</b>	<b>1237</b>	<b>1046</b>	<b>1389</b>	<b>1245</b>	<b>1703</b>

TABLE 25 - GROSS FIXED CAPITAL EXPENDITURE - PUBLIC ENTERPRISES

\$ MILLION

EXPENDITURE BY PURPOSE -														
WATER SUPPLY AND SEWERAGE	336	407	457	561	95	119	99	122	94	142	114	152	130	164
ELECTRICITY AND GAS	403	397	391	483	92	102	90	93	93	115	99	129	112	143
RAILWAYS AND URBAN TRANSIT	159	160	150	235	38	50	32	37	35	55	41	57	52	85
OTHER TRANSPORT AND COMMUNICATION	650	597	760	973	135	147	184	187	199	191	195	239	302	238
HOUSING	75	72	103	217	15	19	20	21	25	37	29	62	42	84
OTHER PURPOSES	113	118	122	135	25	30	29	28	24	41	26	36	31	42
<b>TOTAL</b>	<b>1747</b>	<b>1751</b>	<b>1993</b>	<b>2605</b>	<b>400</b>	<b>467</b>	<b>454</b>	<b>488</b>	<b>470</b>	<b>581</b>	<b>504</b>	<b>676</b>	<b>668</b>	<b>757</b>